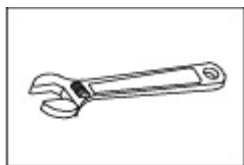


# Installation of the Shower Set

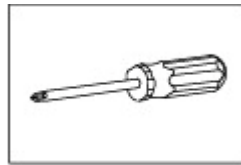
## Tools needed:



Adjustable wrench



Hex key



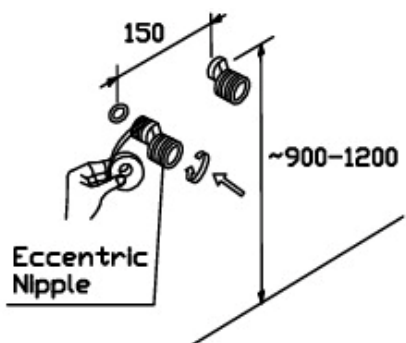
Phillips screwdriver



Pipe Tape

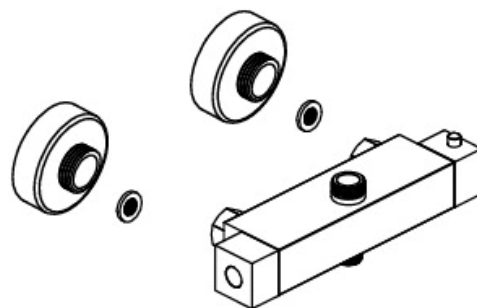
## Notes before installation:

1. Verify that all components are present.
2. Before installation, make sure that all pipes are clean of debris and that there is a shut-off valve.
3. The images in the manual are for general reference and may not accurately represent the faucet you have purchased. If you are having difficulty, contact a professional plumber.
4. If you are going to be away from home for an extended period of time, turn off the main water supply.



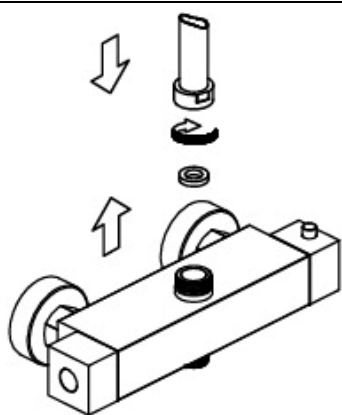
### Step 1

As shown, install the fittings and attach the pipe tape.



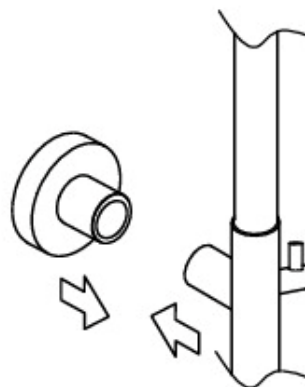
### Step 2

Install the main body and rubber pad.



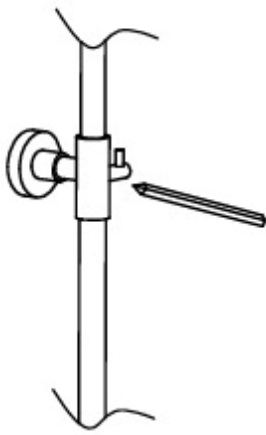
### Step 3

Install the standpipe on the faucet.



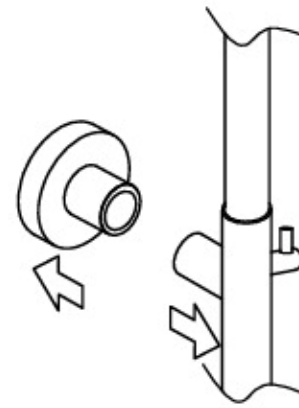
### Step 4

Install the mounting piece on the shower arm.



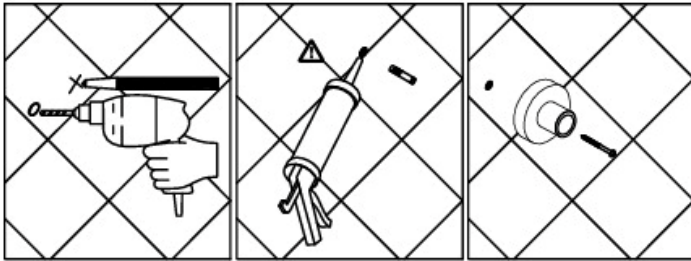
#### Step 5

Make sure the standpipe is level and mark the position of the screw holes.



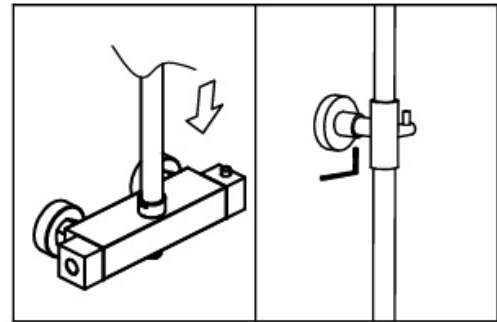
#### Step 6

Remove the standpipe and mounting piece.



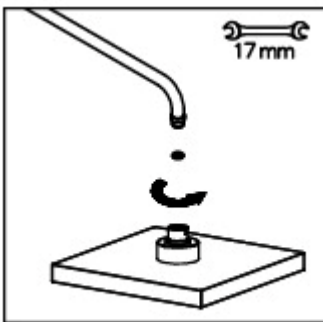
#### Step 7

Drill the holes for the screws and install the anchors. Then, attach the mounting piece and its seal.



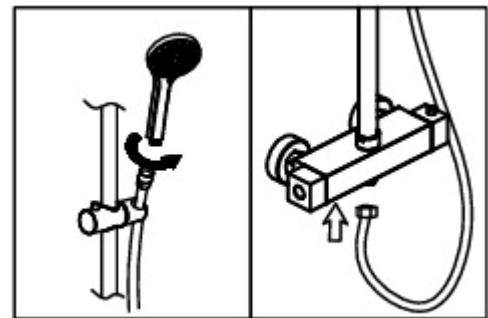
#### Step 8

Install the standpipe on the faucet and tighten the screw.



#### Step 9

Install the rainfall shower head.



#### Step 10

Place the washer on the short end of the hose and connect it to the faucet. Place the washer filter on the long end of the hose. Install the hand shower on this end of the hose and place it in its holder.

## To maintain a smooth and bright surface of the faucet, please clean the faucet regularly or regularly:

Regularly clean with water and dry the faucet with a soft cotton cloth;

Do not use detergents or nylon brushes containing coarse particles such as cleaning powder or polishing powder to avoid product wear and tear;

Due to the ability of acidic detergents to corrode coatings, they should not be used. If using acidity, after washing the tiles with detergent, the tiles and utensils should be thoroughly washed with water immediately, using non washing detergent to flow onto the surface of the faucet, eroding the coating of the faucet.

When using the faucet, do not use force to pull the showerhead hose to prevent it from cracking.

### Common problems and solutions

Abnormal phenomenon	Frequently asked questions	Solution
No water output	The water pipe or inlet pipe is blocked.	Check if the water pipe or inlet pipe is blocked and ensure that it is unobstructed.
	The faucet switch is not turned on or the water outlet pipe is blocked.	Check if the faucet switch is in an open state and if the outlet pipe is blocked,And make it unobstructed.
	The inlet hole of the outlet valve core is blocked by mud or debris.	Be sure to clean the debris and sediment inside the water pipe before installation.
Small outflow	The effluent flow rate is too small.	Check if the water pressure of the water source meets the requirements for the use of the faucet.
	The water source switch is not fully turned on.	Check if the water pressure of the water source meets the requirements for the use of the faucet.
	The bubbler is blocked.	Turn off the switch, disassemble the bubbler, and rinse thoroughly with clean water.
	Failure to follow the instructions for Installing and using the faucetAnd the installation parts are not locked in place.	Be sure to install it in place according to the instructions provided by our company.

Unstop or leaking water	Insufficient or incorrect installation of joint nuts, O-rings or gaskets.	After installation, be sure to check for missing or incorrect installation of O-rings and gaskets Accessories such as joints or nuts.
	Cover, nut, connecting pipe, loose or slippery joint teeth not locked tightly.	Retasten the nuts, joints, covers, or replace the sliding teeth accessories.
	The size of the O-ring and gasket is too large or too small.	Install standard O-ring and gasket.
	The product has been used for a long time, and the O-ring or gasket is damaged wear or aging.	Replace O-ring or gasket with the same specification and material.
Improper assembly	Replace with non company parts.	Check whether to use parts produced by our company, be sure to Replace with parts of the same model and specification produced by our company.
	Using incorrect or incorrect repairs.	Disassemble by yourself. Please read the product installation and usage manual carefully.
Cleaning care	Using incorrect cleaning care.	Clean with clean water, soft cloth, and mild liquid cleaning products surface.
		Do not use any acidic cleaning agents or other corrosive substances Clean the surface of the product and its accessories with cleaning materials!